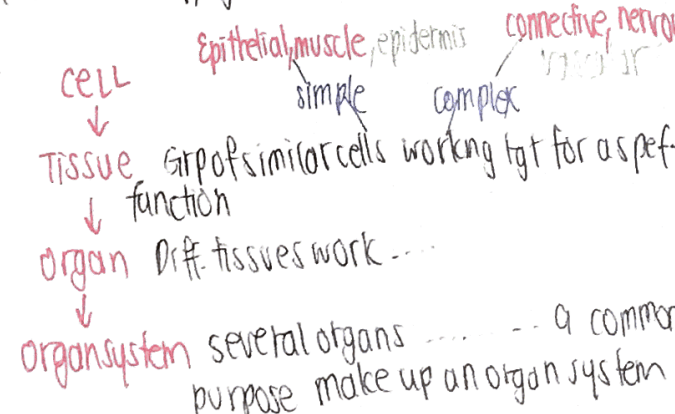


# CELLS

- Basic unit of structure & function in an org.

- CS-m. control subs.
- cytoplasm most cell activities
- nucleus ~~the~~ brain, control cell activities, resp. for cell division, contains genetic info.
- RER (transport) Transport proteins ~~made~~ made by ribosomes via vesicles to GA.
- Ribosome (make) Synthesize proteins
- SER (transport & make) Synthesize fats & steroids, detoxifies, transport fats & steroids made to GA via vesicles
- GA. Stores, modifies & repackage subs. in vesicles

- Mitochondrion Site of aerobic respiration
- Centriole (vs centrosome) Plays a role in cell division
- Vacuole (storage) Stores a solution of sugars & proteins & other fundamental materials (partially p. tonoplast in plants)
- Cell wall (fully permeable) Protect cell from injury, give cell regular shape
- Chloroplast site of p-s.

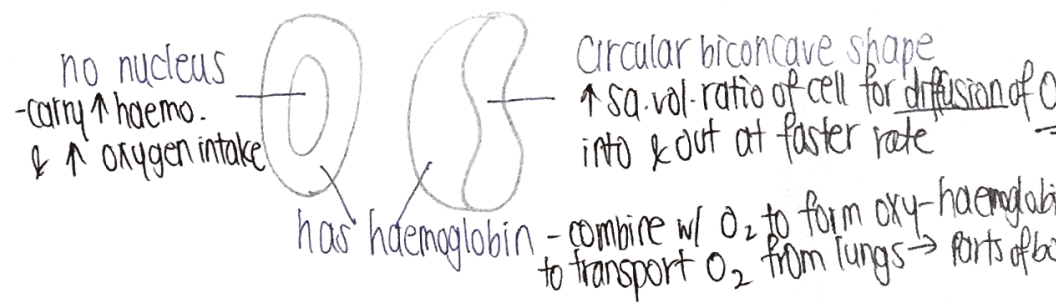


vesicle/vacuole  
smaller/larger  
less permanent/more...  
intracellular/storage  
transport/facility

More free notes at tiktok.com

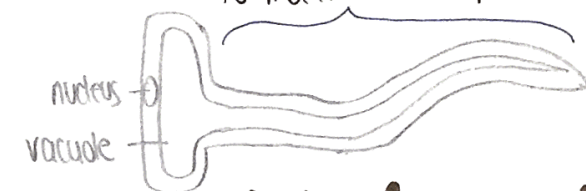
helps individual cells function more efficiently/ensure that whole org. functions effectively

# RBC O<sub>2</sub> Transport



# Root HC

long & narrow protusion (of root hair)  
↑ s.a. to vol. ratio to ↑ contact w/ surr. H<sub>2</sub>O & soil etc. to maximise absorption



1 root hair = many root hair cells

# Absorption of H<sub>2</sub>O & mineral salts

# Xylem Vessel

# Support & conduction

